

The Drive & Control Company

Rexroth
Bosch Group

Subplates size 32
with porting pattern according to DIN 24340
form A and ISO 4401

RE 45060

Edition: 2013-01

Replaces: 02.11



- ▶ Size 32
- ▶ Maximum operating pressure 350 bar

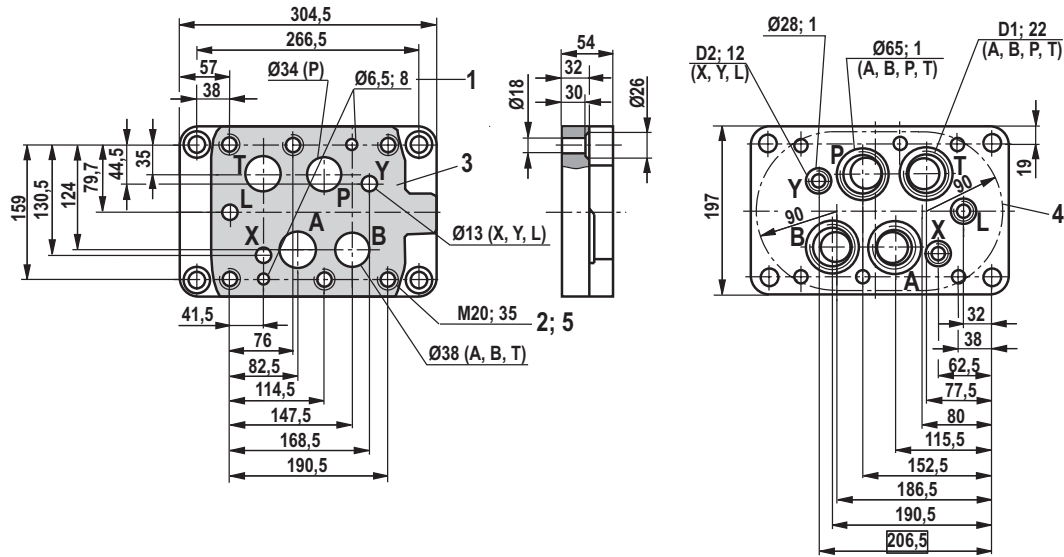
Contents

Type G 157/01 (G1 1/2) and Type G 157/02 (M48 x 2)	1
Type G 158/10	2

Bosch Rexroth AG, RE 45060, edition: 2013-01

2/4 Subplates size 32

Type G 157/01 (G1 1/2) and **Type G 157/02 (M48 x 2)**
(dimensions in mm)



- 1 Bore for locating pin
- 2 Valve mounting thread
- 3 Valve mounting face
- 4 Front panel break-through
- 5 Valve mounting screws

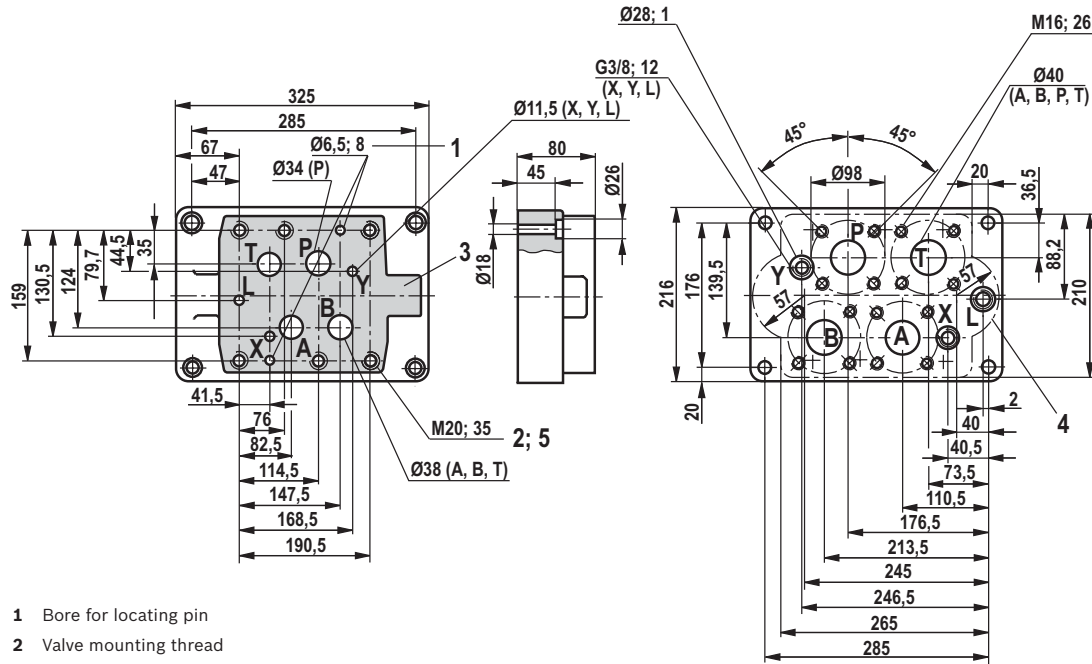
Leakage port L only with valves with pressure-centered zero position

Type	Material no.	Weight in kg	D1	D2	Valve mounting screws
G 157/01	R900424402	18	G 1 1/2	G 3/8	6 hexagon socket head cap screws ISO 4762 - M20 - 10.9 (separate order)
G 157/02	R900424403		M48 x 2	M18 x 1,5	

Note on the valve mounting screws:

Length and tightening torque of the screws depend on the valve types and the sandwich plates that might be provided.

Typ G 158/10
(dimensions in mm)



- 1 Bore for locating pin
- 2 Valve mounting thread
- 3 Valve mounting face
- 4 Front panel break-through
- 5 Valve mounting screws

Leakage port L only with valves with pressure-centered zero position

Type	Material no.	Weight in kg	Valve mounting screws
G 158/10	R900424227	30,5	6 hexagon socket head cap screws ISO 4762 - M20 - 10.9 (separate order)

Connection flanges for G 158/10

Operating pressure	Material no.
up to 160 bar	R900303901
up to 320 bar	R900303921
up to 400 bar	R900303931

Note on the valve mounting screws:

Length and tightening torque of the screws depend on the valve types and the sandwich plates that might be provided.

4/4 **Subplates size 32**

Notes

© This document, as well as the data, specifications and other information set forth in it, are the exclusive property of Bosch Rexroth AG. It may not be reproduced or given to third parties without its consent.
The data specified above only serve to describe the product. No statements concerning a certain condition or suitability for a certain application can be derived from our information. The information given does not release the user from the obligation of own judgment and verification. It must be remembered that our products are subject to a natural process of wear and aging.

Bosch Rexroth AG, RE 45060, edition: 2013-01