



HYDAC clamps

Buegu clamp HRBGS
Oval clamp HROS

General

Special operating conditions require special mounting options. HYDAC clamps enable efficient fastening of hydraulic pipes, hoses and lines, and simultaneously guarantee long-term safety.

Buegu clamp

The Buegu clamp is designed for single lines and pairs of lines with a diameter from 6 to 32 mm.

The clamp can also be used for pairs of lines with different diameters.

Its rubber body makes the clamp particularly sound-absorbing and vibration-damping.

The steel parts of the clamp are also available in stainless steel.

Due to the special design of the clamp, a permanent torque and therefore defined compression of the rubber body is guaranteed.

Oval clamp

The Oval clamp is an inexpensive solution for fastening cables, hoses, and gas, oil and lubrication lines.

The special design requires little installation space and ensures rapid installation. The pipes/lines are clamped securely due to pre-tensioning, and the cover plate ensures a high level of stability. A film hinge connects the two clamp halves. It is fastened using bolts or weld studs M6.

Available in diameters from 6 to 22 mm, different pipe diameters can be combined in the Oval clamp.

Metallic parts are also available in stainless steel.

NOTE

The information in this brochure relates to the operating conditions and applications described. For applications and operating conditions not described, please contact the relevant technical department.

The operator is always responsible for determining the product suitability for the specific application. Quantified values for product characteristics are average values for a new product that undergo a time deterioration process.

Subject to technical modifications and errors.

Buegu clamp HRBGS



Size	Pipe outside Ø d1 - d2* [mm]	
0A	6	
	8	
	10	
	12	
0B	10	
	12	
	14	
	15	
	16	
	18	
	19	
	20	
0C	21.3	
	22	
	23	
	25	
	25.4	
	28	
	30	
	32	
1	6	- 6
	8	- 8
	10	- 10
	12	- 12
2	10	- 10
	12	- 12
	15	- 15
	16	- 16
	17.1	- 17.1
	18	- 18
	19	- 19
	20	- 20
3	21.3	- 21.3
	22	- 22
	23	- 23
	25	- 25
	25.4	- 25.4
	28	- 28
	30	- 30
	32	- 32

* Other Ø combinations on request

Model code

(also order example)

HRBGS 1 A1 12-12 TPE ST M BL

Range

HRBGS = HY-ROS Buegu clamp

Size

0A = size 0A
0B = size 0B
0C = size 0C
1 = size 1
2 = size 2
3 = size 3

Model for complete clamps A = with weld plate, rubber body, sleeve, stirrup and hex. head bolt A1 = with rubber body, sleeve, stirrup und hex. head bolt A1TM = with rubber body, sleeve, stirrup, hex. head bolt and mounting rail nut (C mounting rail not included with this model)

Diameter Specification of each Ø as per pipe outside Ø (size 0 one specification, size 1-3 two specifications) **Material of rubber body** TPE = thermoplastic elastomer (standard: 73° Shore A)

Material of steel parts

ST = steel
A4 = stainless steel (on request)

Thread type

M = metric thread

Plating of steel parts

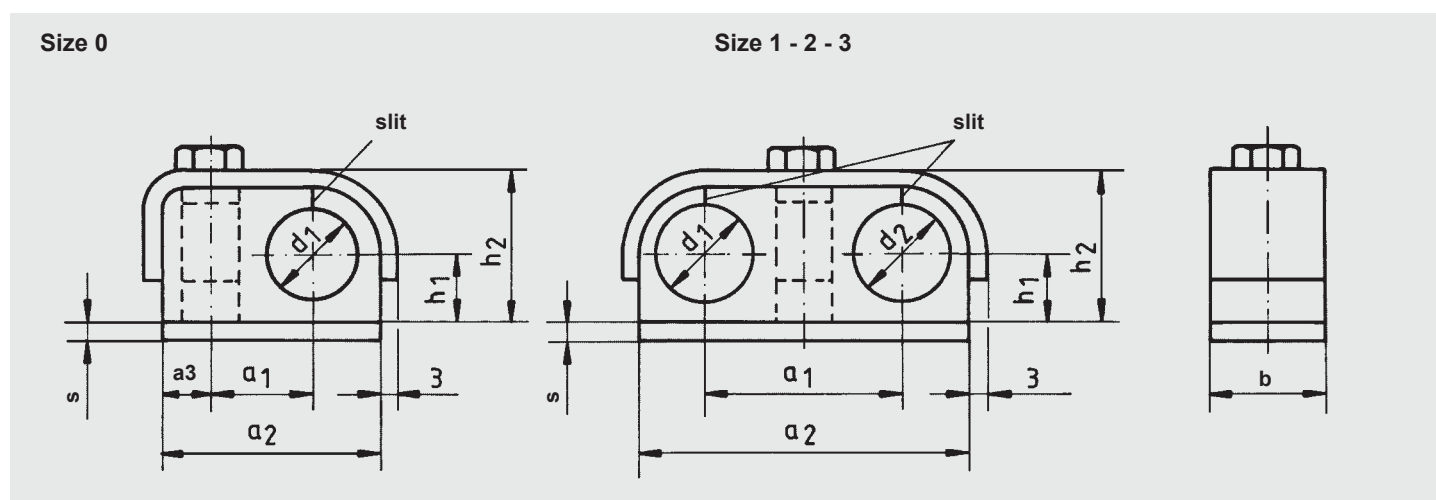
BL = weld plate unplated; stirrup, sleeve and bolt zinc-plated
ZN = zinc-plated

Note: Exposed parts may show signs of flash rust!

Models for Buegu clamp

Size	Model A with weld plate	Model A1 for mounting on base	Model A1TM with mounting rail nut for installation on C mounting rail
0A, 0B, 0C			
1, 2, 3			

Dimensions

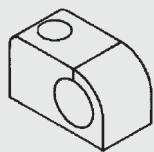


Size	Dimensions [mm]							Hex. head for model			Sleeve height for model [mm]		
	a1	a2	a3	b	h1	h2	s	A	A1	A1TM	A	A1	A1TM
0A	15	34	9 20 10 9 20 12 27 33					M6 x 25	M6 x 30	M6 x 25	11.5	18	11.5
0B	18	39	15 30 20					M6 x 25	M6 x 35	M6 x 30	15.5	22	15.5
0C	23.5	57.5				43	5	M8 x 45	M8 x 50	M8 x 45	32	38	32
1	30	50	-20		10	23	3	M6 x 25	M6 x 30	M6 x 25	11.5	18	11.5
2	35	59	-20		12	27	3	M6 x 25	M6 x 35	M6 x 30	15.5	22	15.5
3	47	86	-30		20	43	5	M8 x 45	M8 x 50	M8 x 45	32	38	32

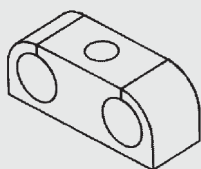
Individual parts for Buegu clamp

Rubber body (GT)

Size 0A, 0B, 0C



Size 1, 2, 3



Model code

(also order example)

HRBGS 0A GT 12 TPE

Range HRBGS = HY-ROS Buegu clamp

Size

0A, 0B, 0C, 1, 2, 3

Designation

GT = rubber body

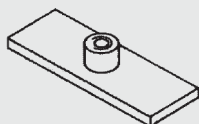
Diameter

Specification of each Ø as per pipe outside Ø (size 0 one specification, size 1-3 two specifications)

Material of clamp body

TPE = thermoplastic elastomer (standard: 73° Shore A)

Weld plate (AP)



Model code

(also order example) HRBGS 0A AP ST M BL Range

HRBGS = HY-ROS Buegu clamp

Size

0A, 0B, 0C, 1, 2, 3

Designation

AP = weld plate

Material of steel parts

A4 = stainless steel (on request)

Thread type

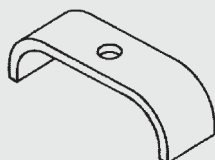
M = metric thread **Plating**

of steel parts BL =

unplated ZN = zinc-plated

Note: Exposed parts may show signs of flash rust!

Stirrup (BUE)



Model code

(also order example)

HRBGS 3 BUE ST ZN

Range HRBGS = HY-ROS Buegu clamp

Size

0A, 0B, 0C, 1, 2, 3

Designation BUE

= stirrup

Material of steel parts

ST = steel

A4 = stainless steel (on request)

Plating of steel parts

ZN = zinc-plated

Sleeve (HUE)



Model code

(also order example)

HRBGS HUE 11.5 ST ZN

Range

HRBGS = HY-ROS Buegu clamp

Designation

HUE = sleeve

Length

(length depends on size and model of Buegu clamp)

Material of steel parts

ST = steel

A4 = stainless steel (on request)

Plating of steel parts

ZN = zinc-plated

Hex. head bolt (hex. head bolt ISO 4014 / 4017)



Model code

(also order example)

6kt-shr.ISO4014 - M6 x 30 - 8.8 A3B

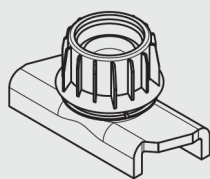
Range 6kt-shr.ISO4014 = hex. head bolt to ISO 4014 6kt-shr.ISO4017 = hex. head bolt to ISO 4017 **Size** ISO4014 ISO4017 M6 x 30 M6 x 25 M6 x 35 M8 x 45 M8 x 50 **Bolt quality** 8.8 = to ISO 4014, ISO 4017

Bolt plating A3B =

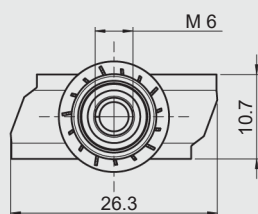
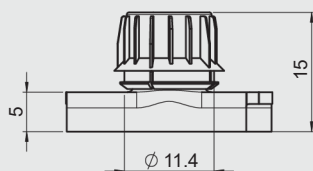
zinc-plated

Others on request

Mounting rail nut (TM)



Dimensions



Model code

(also order example)

HRL TMV6 ST ZN

Range HRL = HY-ROS light range **Designation**

TMV6 = mounting rail nut with anti-twist protection, size M6 (standard)

TM6 = mounting rail nut without anti-twist protection, size M6

Material of steel parts

ST = steel

A4 = stainless steel (on request)

Plating of steel parts

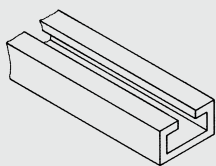
ZN = zinc-plated

Others on request

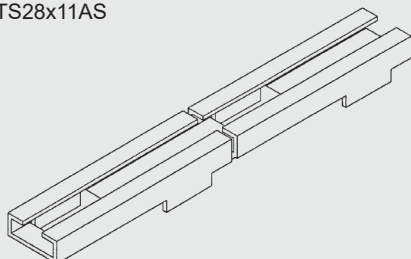
Accessories

C mounting rail (TS)

C mounting rail TS

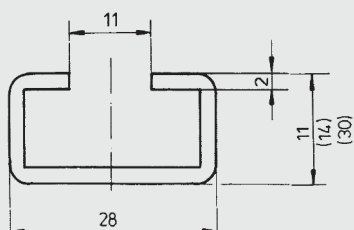


C mounting rail with weld struts
TS28x11AS

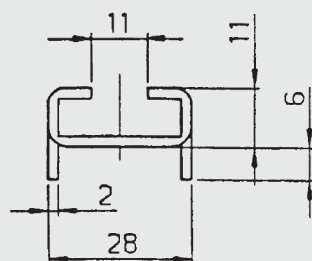


Dimensions

C mounting rail TS available in
1 m and 2 m pieces



C mounting rail TS with weld struts AS
available in 1 m pieces



Model code (also order example)

HRL TS28x11 ST BL 1m

Range

HRL = HY-ROS light range

Model

TS28x11 = C mounting rail 28x11

TS28x14 = C mounting rail 28x14

TS28x30 = C mounting rail 28x30

TS28x11AS = C mounting rail with weld struts 28x11

Material of steel parts

ST = steel

AL = aluminium (on request)

A2 = stainless steel (on request)

A4 = stainless steel (on request)

Plating of steel parts

BL = unplated

ZN = zinc-plated

Others on request

Length

1 m

2 m (not for C mounting rail with weld struts)

Other lengths on request

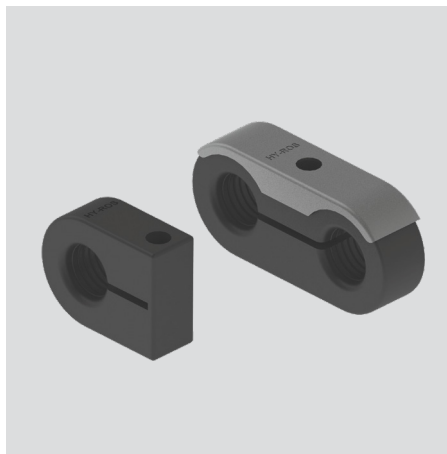
Note: Exposed parts may show signs of flash rust!

NOTE

The information in this brochure relates to the operating conditions and applications described. For applications and operating conditions not described, please contact the relevant technical department.

The operator is always responsible for determining the product suitability for the specific application. Quantified values for product characteristics are average values for a new product that undergo a time deterioration process.

Subject to technical modifications and errors.



Oval clamp HROS

Size	Pipe outside Ø d1 - d2* [mm]
0a	6
	6.4
	8
0b	8
	9.5
	10
	12
	12.7
0c	10
	12
	12.7
	13.5
	14
	15
	16
0d	14
	15
	16
	17.2
	18
	19
	20
	21.3
	22
1	6
	6.4
	8
2	8
	9.5
	10
	12
	12.7
3	10
	12
	12.7
	13.5
	14
	15
	16
4	14
	15
	16
	17.2
	18
	19
	20
	21.3
	22
	25
	25.4

* different Ø possible in sizes 1-4

Model code (also order example)

HROS 3 KP 15-15 PP

Range

HROS = HY-ROS Oval clamp

Size

0a = size 0a
0b = size 0b
0c = size 0c
0d = size 0d
1 = size 1
2 = size 2
3 = size 3
4 = size 4

Model for complete clamps

KP = pair of clamp jaws

Diameter

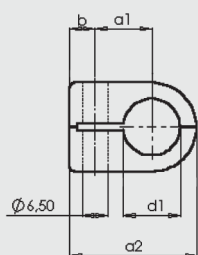
Specification of each Ø as per pipe outside Ø (size 0 one specification, size 1-4 two specifications)

Material of clamp jaws

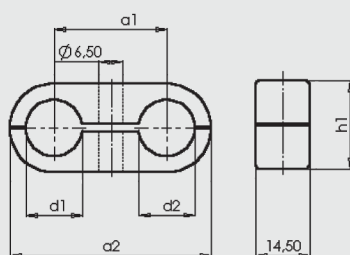
PP = polypropylene
PA = polyamide

Dimensions

Size 0



Size 1 - 4



Size	Dimensions [mm]						Torques [max. Nm]		
	d1, d2*			a1	a2	b	h1	Material PA	Material PP
0a	6	...	8	9	23	7	13.5	1	1
0b	8	...	12.7	11	27	7	18.5	2	1
0c	10	...	16	15	34	7	23.5	2	1
0d	14	...	22	19	40	6	30.5	5	2
1	6	...	8	18	32	-	13.5	1	1
2	8	...	12.7	22	41	-	18.5	2	1
3	10	...	16	30	54	-	23.5	4	2
4	14	...	22	38	69	-	30.5	4	2

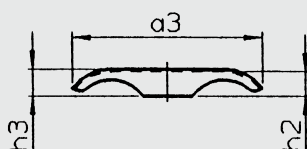
* = pipe outside

Ø

Accessories

Cover plate (DP)

Size 1 - 4



Size	Dimensions [mm]		
	a3	h2	h3
1	29	4	4.5
2	40	4	4.5
3	50.5	7.6	8.2
4	63	7.6	8.2

Model code

(also order example)

HROS 3 DP ST ZN

Range

HROS = HY-ROS Oval clamp

Size

1, 2, 3, 4

Designation

DP = cover plate

Material of steel parts

ST = steel

A4 = stainless steel (on request)

Plating of steel parts

ZN = zinc-plated

NOTE

The information in this brochure relates to the operating conditions and applications described. For applications and operating conditions not described, please contact the relevant technical department.

The operator is always responsible for determining the product suitability for the specific application. Quantified values for product characteristics are average values for a new product that undergo a time deterioration process.

Subject to technical modifications and errors.