

**RE 29 055-M/08.00**

Replaces: 03.00



## 4/2 and 4/3 proportional directional control valve, direct operated, without electrical position feedback, sea water resistant Type 4WRA 6...JK31

### Features of the sea water resistant version

The following modifications have been carried out to the standard version:

- The external metal components have been zinc galvanised (solenoid, housing), aluminium nickel plated (component plug) and plastic (electronics housing)
- Sea water resistance is identified by the code „JK31“ in the ordering code

#### Note:

The valve fixing screws have to be separately ordered:

4 off M5 x 50, DIN 912-10.9 NEL<sup>1)</sup>,  $M_A = 8,9 \text{ Nm}$ , material no.: **00011396**

<sup>1)</sup> The code NEL stands for non-electrolytically applied zinc coatings which contain a lubrication additive for the reduction of friction in accordance with ISO/WD 10683, colour silver.

Further information can be obtained from the standard documentation RE 29 055.

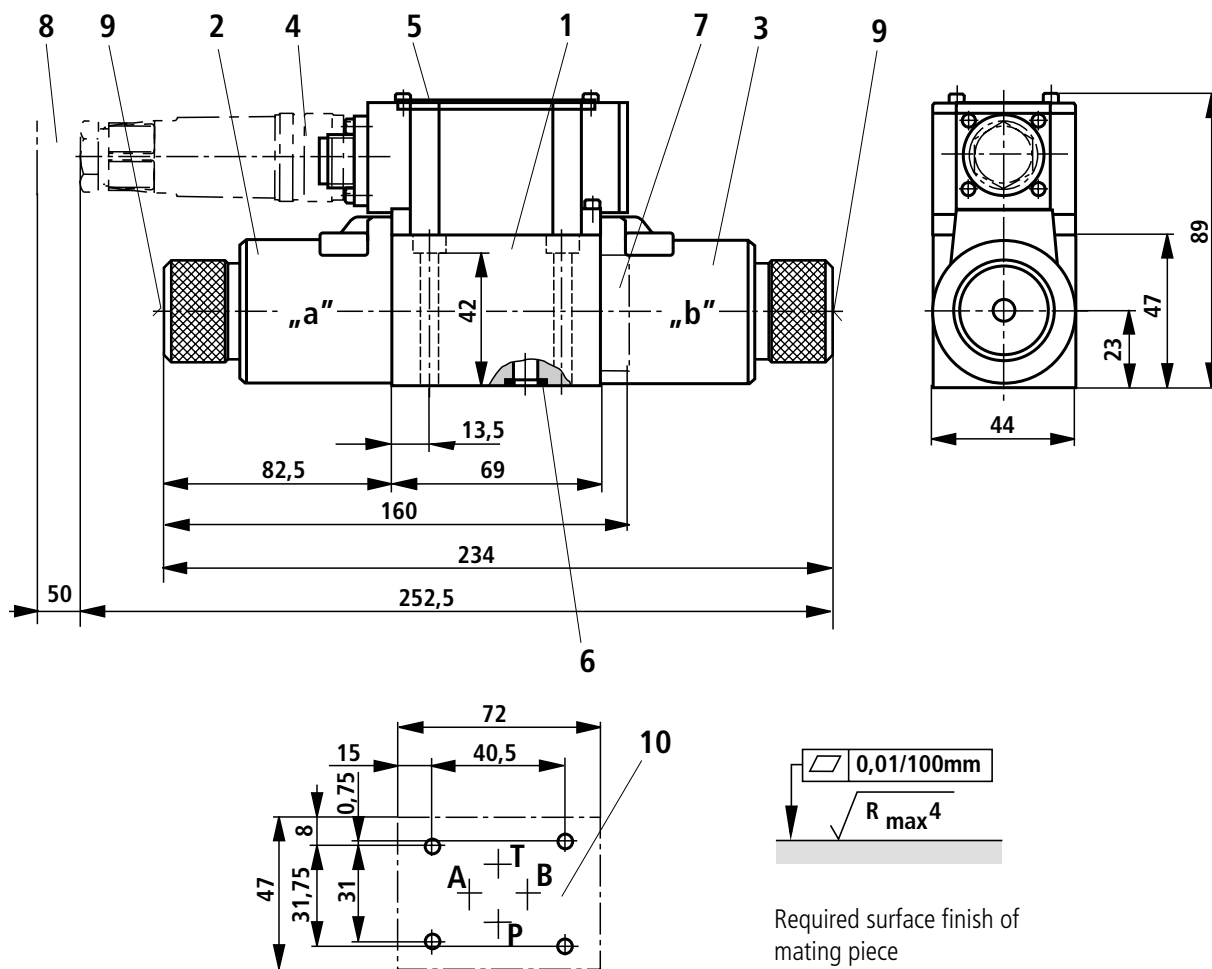
### Ordering details, preferred types

4WRA		6		– 2X / G24		J	K31/	V	*
Nominal size 6		= 6							
						<b>K31 =</b> With component plug to E DIN 43 563-AM6-3 <b>Without</b> plug-in connector Plug-in connector – separate order, see standard documentation RE 29 055			
						<b>J =</b> Sea water resistant			
						<b>No code =</b> Without hand override			
						<b>N =</b> With hand override			

Preferred types	
Type	Material number
4WRA 6 EA15-2X/G24NJK31/V	00952255
4WRA 6 EA30-2X/G24NJK31/V	00952256

## Unit dimensions

(Dimensions in mm)



- |   |   |    |   |
|---|---|----|---|
| 1 | Valve housing   | 8  | Space required for the connection cable and to be able to remove the plug-in connector                  |
| 2 | Proportional solenoid "a"   | 9  | Hand override   |
| 3 | Proportional solenoid "b"   | 10 | Machined valve mounting surface, connection locations to DIN 24 340 form A, ISO 4401 and CETOP-RP 121 H |
| 4 | Plug-in connector to E DIN 43 563-BF6-3/Pg11, separate order                                |    |   |
| 5 | Name plate  |    |   |
| 6 | R-ring 9.81 x 1.5 x 1.78 (Ports A, B, P, T)   |    |   |
| 7 | Plug for valves with one solenoid (2 switching positions, versions <b>EA</b> or <b>WA</b> ) |    |   |

The specified data is for product description purposes only and may not be deemed to be guaranteed unless expressly confirmed in the contract.

All rights reserved – Subject to revision