

Pulsation damper

RE 29253/06.05
Replaces: 04.04

1/4

Type SYPD

Series 2X
Nominal pressure 400 bar (type SYPD 0001)
Nominal pressure 300 bar (type SYPD 0002)



H7189/04

Type SYPD 0001



H7119/03

Type SYPD 0002

Table of contents

Contents

Merkmale

Ordering code

Unit dimensions

Page

1

2

3

Features

Application

SYPD pulsation dampers operate according to the reflection principle and are used in hydraulic systems that incorporate displacement pumps, where noise is transmitted predominantly through liquid-borne sound.

Rating

SYPD pulsation dampers are designed for a basic frequency of 450 Hz and, at this frequency, block the transmission of noise > 24 dB. This rating is ideal for pumps of types A10VSO and A4VSO at a drive speed of $n = 1500 \text{ min}^{-1}$.

Installation

The installation position of the damper is optional, with the direction of flow having to be observed. It should be arranged as closely as possible to the pump outlet.

To prevent the transmission of mechanical vibration to the system, it is required to install the pulsation damper so that it is isolated from structure-borne noise and to connect one connection side using a flexible hose.

Ordering code

Pulsation damper for A4VSO

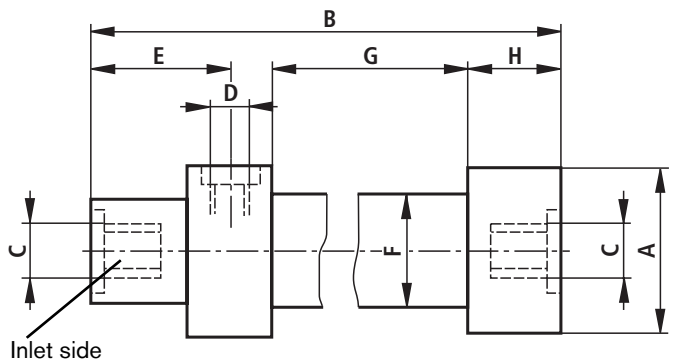
SYPD 0001		2X	/400		F450			*
Series 20 to 29 (20 to 29: unchanged technical data and pin assignment)		= 2X				Further details in clear text		
Nominal pressure 400 bar		= 400				Connection version for V071		
Pump type and size						01 = Thread to DIN ISO 228 for V180, V355, V750		
A4VSO: Sizes 40 and 71		= V071				11 = SAE flange (high-pressure series)		
A4VSO: Sizes 125 and 180		= V180				M = NBR seals suitable for mineral oil (HL, HLP) to DIN 51 524		
A4VSO: Sizes 250 and 355		= V355				V = FKM seals suitable for phosphate ester (HFD-R)		
A4VSO: Sizes 500 and 750		= V750						
Pulsation frequency 450 Hz		= F450						

Pulsation damper for A10VSO

SYPD 0002		2X	/300		F450		01	*
Series 20 to 29 (20 to 29: unchanged technical data and pin assignment)		= 2X				Further details in clear text		
Nominal pressure 300 bar		= 300				Connection version		
Pump type and size						01 = Thread to DIN ISO 228		
A10VSO: Sizes 18, 28, 45 and 71		= V018				M = NBR seals suitable for mineral oil (HL, HLP) to DIN 51 524		
A10VSO: Sizes 100 and 140		= V100				V = FKM seals suitable for phosphate ester (HFD-R)		
Pulsation frequency 450 Hz		= F450						

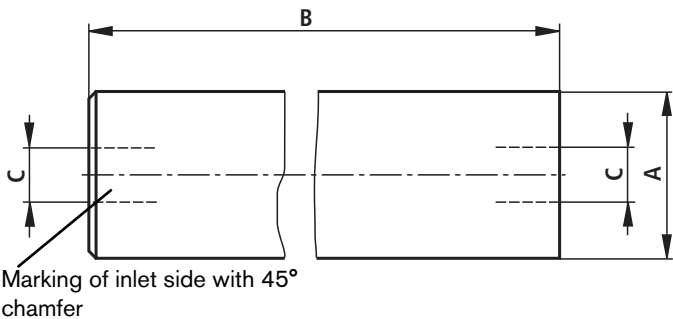
Unit dimensions (in mm)

SYPD 0001
for A4VSO size 40 and size 71

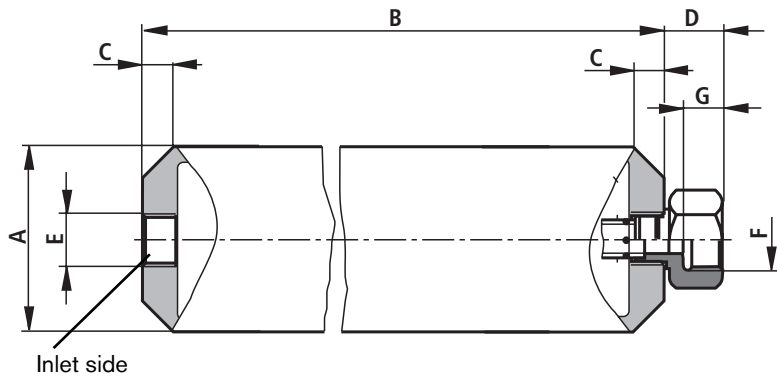


	Pump sizes			
	40, 71	125, 180	250, 355	500, 750
A	Ø 125	Ø 160	Ø 160	Ø 160
B	925	854	854	854
C	G 1 1/4	SAE 1 1/4"	SAE 1 1/2"	SAE 2"
D	G 1 1/4			
E	81			
F	Ø 83			
G	~ 720			
H	~ 75			

for A4VSO sizes 125 to 750



SYPD 0002 für A10VSO



	Pump size	
	18, 28, 45, 71	100, 140
A	Ø 114,3	Ø 114,3
B	794	794
C	25 x 45°	25 x 45°
D	38	39
E	G 1	G 1 1/4
F	G 1 1/4	G 1 1/2
G	26.5	28.5